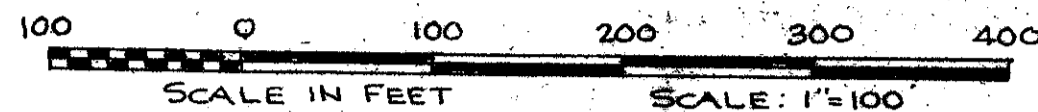


h2-24

# SOUTHFIELDS - PHASE II OF PALM BEACH POLO AND COUNTRY CLUB - WELLINGTON COUNTRYPLACE - P.U.D.

IN PART OF SECTION 21, TWP. 44 S., RGE. 41E.  
PALM BEACH COUNTY, FLORIDA  
IN 3 SHEETS SHEET NO. 2

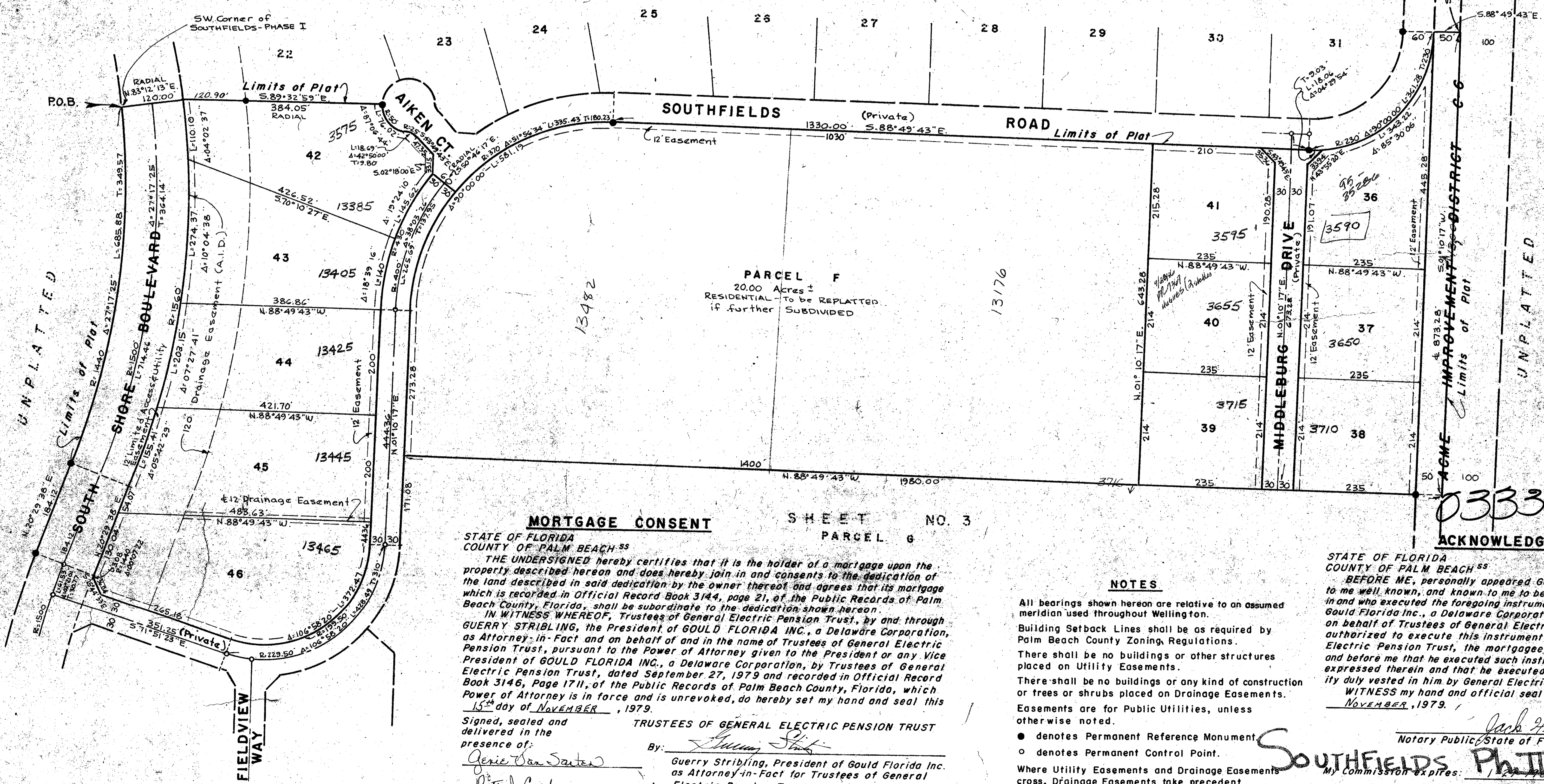
GEE & JENSON  
ENGINEERS - ARCHITECTS - PLANNERS, INC.  
WEST PALM BEACH, FLORIDA  
OCTOBER 1979



24

STATE OF FLORIDA  
COUNTY OF PALM BEACH  
This Plat was filed for record at \_\_\_\_\_ M.  
this \_\_\_\_\_ day of \_\_\_\_\_, 1980.  
and duly recorded in Plat Book No. \_\_\_\_\_  
on page \_\_\_\_\_  
JOHN B. DUNKLE, Clerk Circuit Court  
By: \_\_\_\_\_, C.C.

SOUTHFIELDS - PHASE I OF PALM BEACH POLO & COUNTRY CLUB - WELLINGTON COUNTRYPLACE - P.U.D., (UNRECORDED)



### MORTGAGE CONSENT

SHEET NO. 3  
PARCEL G

STATE OF FLORIDA  
COUNTY OF PALM BEACH  
THE UNDERSIGNED hereby certifies that it is the holder of a mortgage upon the property described hereon and does hereby join in and consents to the dedication of the land described in said dedication by the owner thereof and agrees that its mortgage which is recorded in Official Record Book 3144, page 21, of the Public Records of Palm Beach County, Florida, shall be subordinate to the dedication shown hereon.  
IN WITNESS WHEREOF, Trustees of General Electric Pension Trust, by and through GUERRY STRIBLING, the President of GOULD FLORIDA INC., a Delaware Corporation, as Attorney-in-Fact and on behalf of and in the name of Trustees of General Electric Pension Trust, pursuant to the Power of Attorney given to the President or any Vice President of GOULD FLORIDA INC., a Delaware Corporation, by Trustees of General Electric Pension Trust, dated September 27, 1979 and recorded in Official Record Book 3146, Page 1711, of the Public Records of Palm Beach County, Florida, which Power of Attorney is in force and is unrevoked, do hereby set my hand and seal this 15<sup>th</sup> day of NOVEMBER, 1979.  
Signed, sealed and delivered in the presence of:  
Genie Van Susteren  
Betty J. Caraker  
By: Guerry Stribling  
Guerry Stribling, President of Gould Florida Inc. as Attorney-in-Fact for Trustees of General Electric Pension Trust

### NOTES

- All bearings shown hereon are relative to an assumed meridian used throughout Wellington.
- Building Setback Lines shall be as required by Palm Beach County Zoning Regulations.
- There shall be no buildings or other structures placed on Utility Easements.
- There shall be no buildings or any kind of construction or trees or shrubs placed on Drainage Easements.
- Easements are for Public Utilities, unless otherwise noted.
- denotes Permanent Reference Monument
- denotes Permanent Control Point.
- Where Utility Easements and Drainage Easements cross, Drainage Easements take precedent.

0333-302

### ACKNOWLEDGMENT

STATE OF FLORIDA  
COUNTY OF PALM BEACH  
BEFORE ME, personally appeared GUERRY STRIBLING, to me well known, and known to me to be the individual described in and who executed the foregoing instrument as President of Gould Florida Inc., a Delaware Corporation, as Attorney-in-Fact on behalf of Trustees of General Electric Pension Trust, duly authorized to execute this instrument in the name of General Electric Pension Trust, the mortgage, and acknowledged to and before me that he executed such instrument for the purpose expressed therein and that he executed the same under authority duly vested in him by General Electric Pension Trust.  
WITNESS my hand and official seal this 15<sup>th</sup> day of NOVEMBER, 1979.

Jack H. Carter  
Notary Public, State of Florida, at large  
SOUTHFIELDS Ph. II P.B.P. + CC  
My Commission Expires: 1-27-1980

39/24